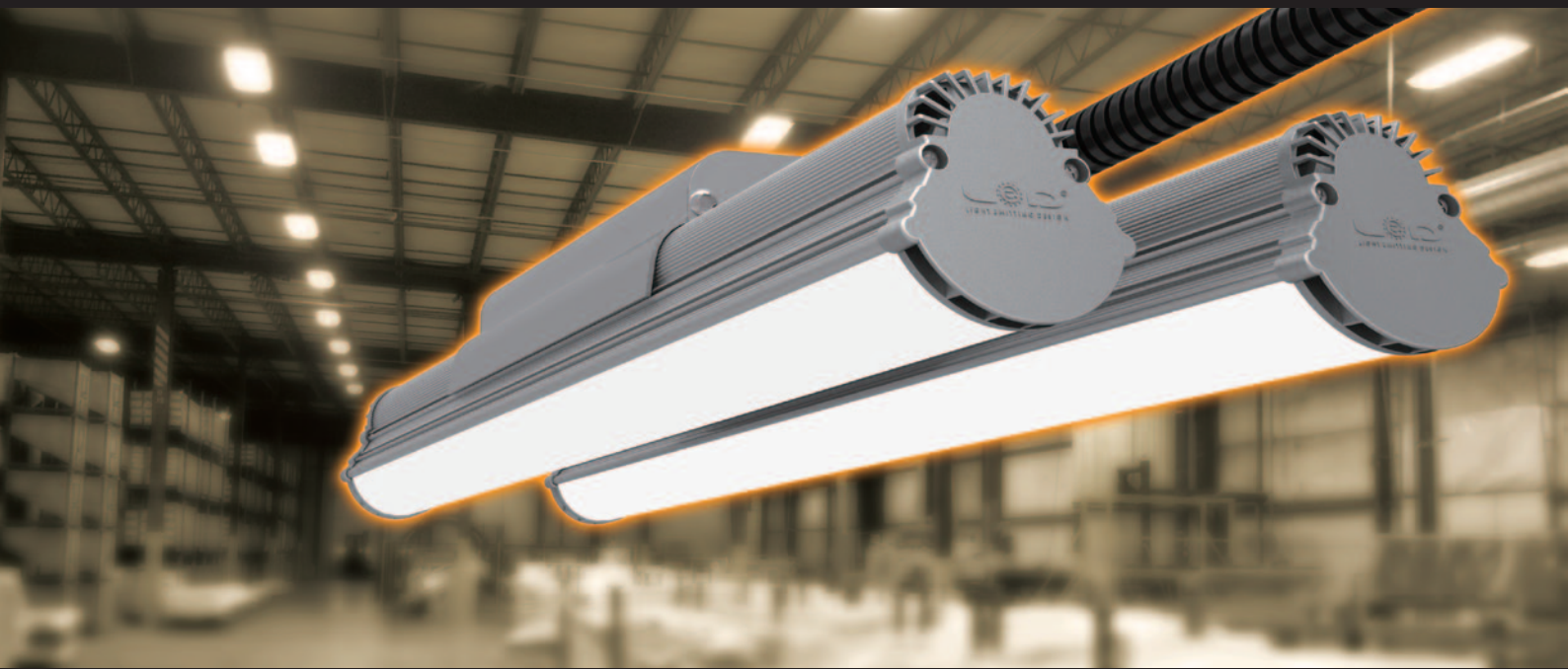


# SML3000

LED LINEAR INDUSTRIAL LIGHTING



ULTRA BRIGHT

HIGH TECH

DURABLE

# SML 3000 Series

LED Linear Industrial Lighting



## Product Information

The **SML3000** is a light weight, all-purpose **Low - Mid Bay** linear industrial lighting fixture with versatile mounting options. It is designed to replace fluorescent fixtures of much higher wattages for multiple applications. This ultra-energy efficient high output luminaire consumes only **75-100 Watts** and provides glare free, 120° comfortable uniform lighting in most working environments.

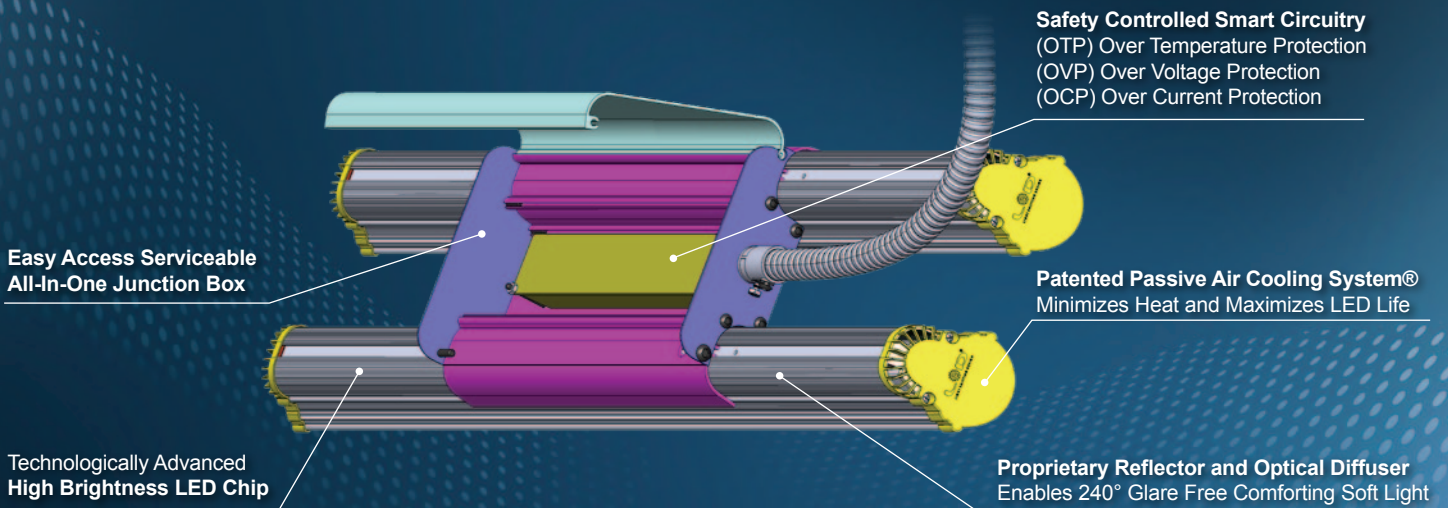
The patented **Passive Air Cooling System** enables low LED Junction Temperatures ( $T_j$ ) for maintenance free long life.

Patent No. 20130242548 A1

Other US and international patents pending

# SML 3000 Series

## LED Linear Industrial Lighting



## Advantages of SML3000

- LED linear industrial lighting with **short ROI period**
- Available in 75 and 100 Watt configuration
- **Light weight** easy to install versatile design with various mounting options
- **Smart Circuitry System** gives greater protection when used in unstable electrical grids
- **Glare-Free, 120°** comfortable uniform lighting for all working environments
- **Patented Passive Air Cooling System** enables low LED junction temperatures ( $T_j$ ) for maintenance free long life
- Easy Access Serviceable all-in-one junction box / LED driver
- **Cost effective Solution** as a true LED replacement with a **5-Year Limited Warranty**

## Application

- Industrial Lighting
- Warehouses
- Utility Lighting

# SML 3000 Series

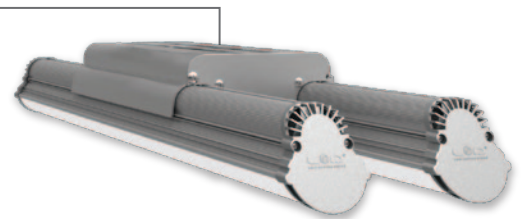
LED Linear Industrial Lighting

## Mounting Options

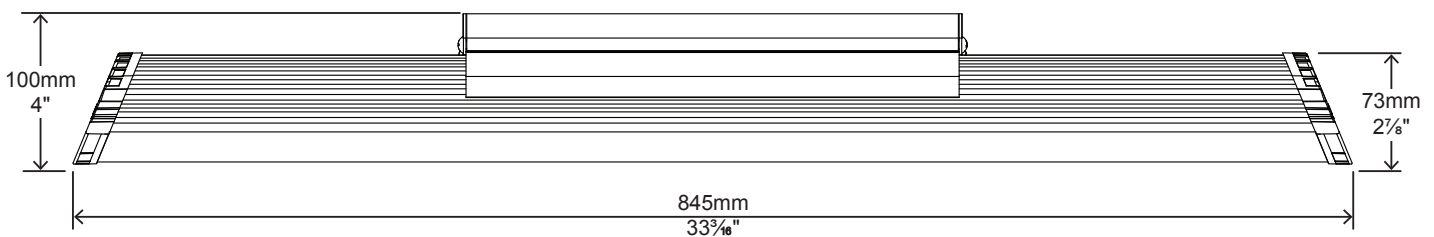
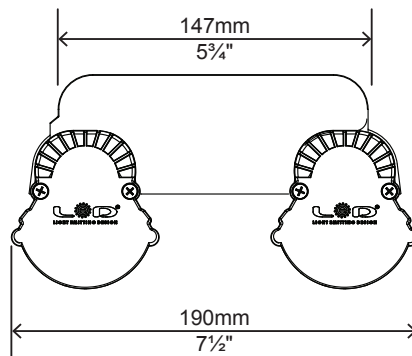


**GH4 - CHAIN CHANDELIER MOUNTING SYSTEM**

**SMH - SURFACE MOUNTING SYSTEM**



## External Dimensions



# SML 3000 Series

## LED Linear Industrial Lighting

### Ordering Information

<b>SML300</b>	<b>Voltage</b>	<b>CCT</b>	<b>Driver</b>	<b>Mounting *</b>
	UV = 90-277VAC HV = 305-528VAC			

\*Surface Mount comes standard, please see accessories for additional mounting system options.

### Example

Part Number	Part Description
<b>SML300UV-50DM-SMH</b>	75Watt LED Linear Industrial Lighting / 90-277VAC / 5000K Cool White / Dimmable / Surface Mount

### Packaging Information

Case Quantity	Dimensions (LxWxH)	Weight
6	98 x 42 x 35 cm 38 $\frac{3}{8}$ x 16 $\frac{1}{2}$ x 13 $\frac{3}{4}$ in	34.50 kg 76.00 lbs

# SML 3000 Series

## LED Linear Industrial Lighting

### Specification

Model	SML3000	
Fixture Watts *	75 W	100 W
Lumens (Total) *	8,625 Lumens	11,500 Lumens
Efficacy *	115 Lumens / W	115 Lumens / W
T <sub>s</sub> - Solder Point Temp *	59°C	
L70 Rating @ T <sub>a</sub> 25°C	> 80K hours	
Light Beam Angle	120° @ 70% Flux	
Operational Temperature (T <sub>a</sub> )	-40°C ~ 50°C	
Input Voltage	90-277VAC 47~63Hz (available in 348 & 480VAC)	
LED Model	Nichia	
Light Beam Angle	120° @ 70% Flux	
CRI	85	
Lighting Control	Dimmable (0-10V)	
Warranty	5-Year Limited	
Operational Temp / Storage Temp.	-40°C ~ 50°C	
Humidity	20 - 95% RH non - condensing	

\* Test data @ T<sub>a</sub>: 25°C

NOTE: All Values Have ±7% Tolerance

