

ILX3525

EXTREME APPLICATION INDUSTRIAL LIGHTING

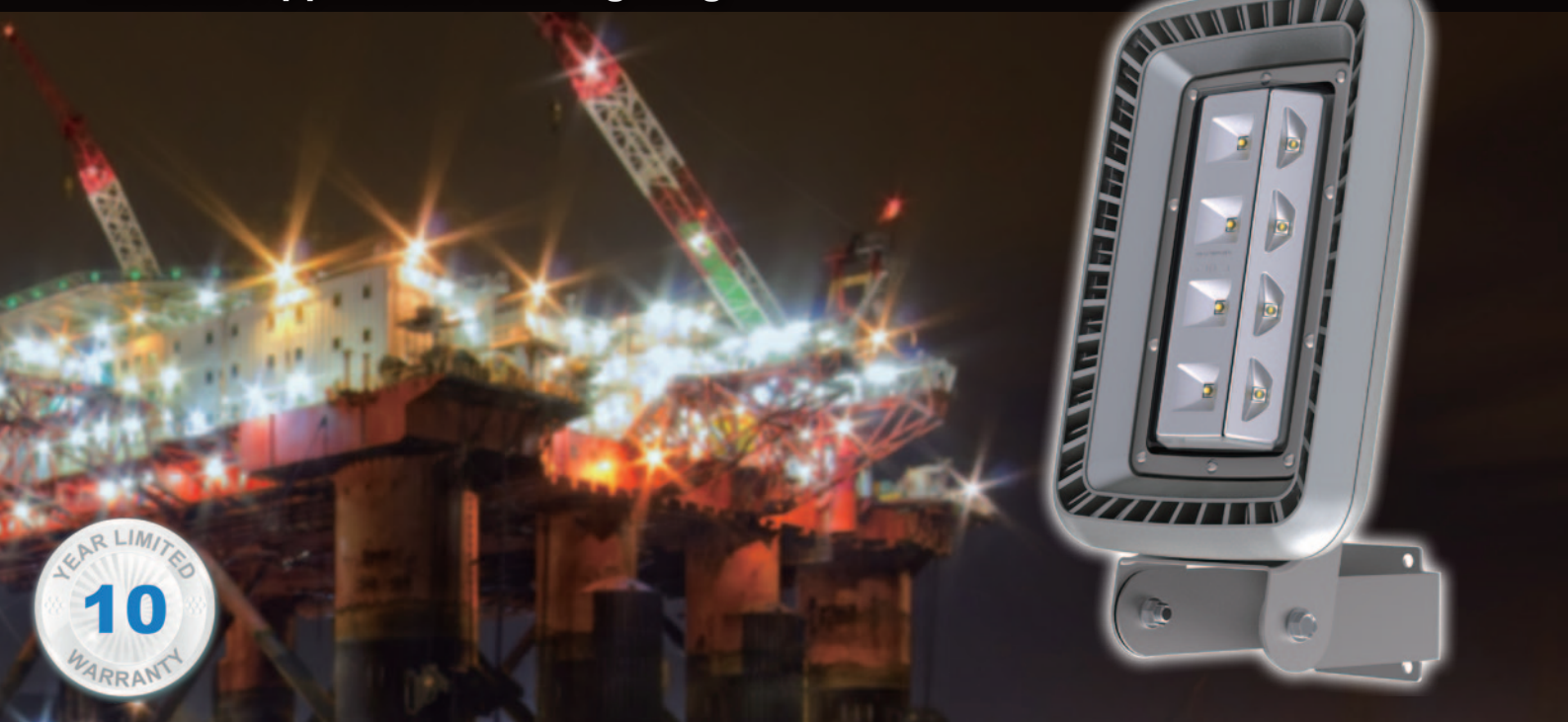


HIGH TECH DURABLE



ILX 3525 Series

Extreme Application LED Lighting



Product Information

The **ILX3525** Series is designed specifically to withstand the harsh conditions of extreme environments such as **hazardous area** and **high heat applications**. Its compact design incorporates the industry's highest power density and efficacy making it the first true **IP68 marine rated LED industrial** light to replace existing high-pressure mercury / sodium, and metal halide lamp fixtures for **offshore Oil & Gas platforms**. It is available in numerous choices of optics with various mounting options.

Its patented Air Bi-Pass Convection System enables excellent thermal management to ensure **long LED life** with extended lumen maintenance and **virtually zero fixture maintenance**. Without any secondary optics, the **ILX3525** Series provides ultra-bright industry leading high efficacy light output, resulting in cost effective solutions with a **short ROI period**.

Patent No. 8,757,842 B2 / 8,272,765 B2 / 9,383,084 / 6,830,364

Other US and international patents pending

Application

- Oil & Gas
- Mining
- Gas Canopy Lighting
- Food processing plants
- Power Generation
- Foundries
- Paper and Pulp Mills
- Desalination Plants
- Chemical Plants
- Water & Sewage

ILX 3525 Series

Extreme Application LED Lighting



Why **LED**[®]

- Technologically Advanced, low profile industrial light
- Flexible Design with versatile mounting options for all applications
- Superior craftsmanship using high grade raw materials
- Cost effective solution with a Short ROI Period
- Available in 35 / 55 / 75 / 100 watt configuration

Advantages of ILX3525

- Ultra bright industry leading **High Efficacy (lm/W)** LED industrial light
- **IP68** and Petro-Chemical Industry rated luminaire with an exceptional **10-Year Limited Warranty**
- **Hazardous Area and High Heat Rating** with an operational temperature of - 40 ~ + 60°C
- NEMA 4X industrial grade Dura-Guard powder coating with **10 years protection on weather and corrosion**
- **Marine Rated Stainless Steel** components and trimmings
- Proprietary wide angle optics enabling glare-free uniform lighting for all applications. Eliminating the need for costly and fragile plastic lenses
- Advanced Thermal Technology enables low LED junction temperatures (Tj) for **maintenance free long life**
- High efficiency LED driver with integrated smart circuitry and surge & transient voltage protection
- Optional programmable **RF Wireless Smart Control System with PIR motion & daylight sensor** enabling greater savings and flexibility
- **L70 Rating @ Ta 25°C over 150,000 hour rated life**
- **Designed and engineered in USA**

ILX 3525 Series

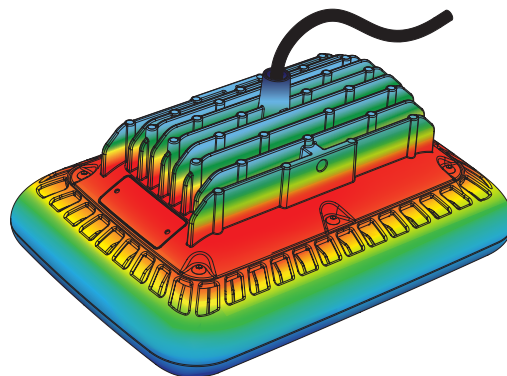
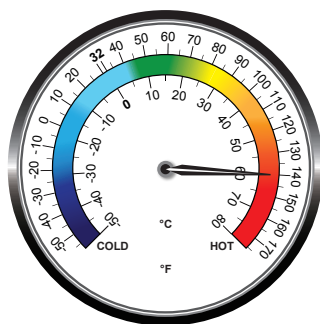
Extreme Application LED Lighting

Thermal Management

The new **ILX series** LED drivers are designed specifically for extreme application lighting that requires high ambient operating temperatures. It utilizes the latest topology in electronic circuitry design with state of the art military and industrial grade components. The LED driver is encapsulated with thermal potting into a dedicated heat

sink for better thermal performance and greater flexibility for service and maintenance.

The **ILX** LED driver module delivers an outstanding 95% efficiency and is designed to last over 150,000 hours in harsh environments with high operating ambient temperatures.



System Watts	T6 Temperature Code Ambient Temperature Range		T5 Temperature Code Ambient Temperature Range	
35 W	-40°F ~ 140°F	-40°C ~ 60°C		
55 W	-40°F ~ 131°F	-40°C ~ 55°C	-40°F ~ 140°F	-40°C ~ 60°C
75 W	-40°F ~ 122°F	-40°C ~ 50°C	-40°F ~ 140°F	-40°C ~ 60°C
100 W	-40°F ~ 122°F	-40°C ~ 50°C	-40°F ~ 140°F	-40°C ~ 60°C

ILX 3525 Series

Extreme Application LED Lighting

Optic Options

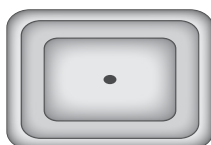
02 - Type II / wall mount & perimeter lighting applications

M - Medium



S5 - Type V Rectangular / symmetric for canopies, tunnels, parking garages and wide flood applications

M - Medium



F5 - Type V Opaque - Frosted / symmetric for ultra uniform & low glare applications

L - Long



ILX 3525 Series

Extreme Application LED Lighting

Mounting Options



**SSL - SPRING LOADED SNAP & SLIDE
SURFACE MOUNTING SYSTEM**



W90 - WALL MOUNTING SYSTEM



**SWL - VARIABLE ANGLE SWIVEL
MOUNTING SYSTEM**

**SSL - SPRING LOADED SNAP & SLIDE
MOUNTING SYSTEM**



**CH4 - CHAIN CHANDELIER
MOUNTING SYSTEM**



ILX 3525 Series

Extreme Application LED Lighting

Ordering Information

ILX3525	Wattage	Voltage	Optics	Pitch	CCT	Driver	Mounting *
	035 = 35Watt 055 = 55Watt 075 = 75Watt 100 = 100Watt	UV = 90-277VAC DV = 127-300VDC	02 = Type II S5 = Type V Rectangular F5 = Type V Frosted B2 = Billboard	M = Medium L = Long	30 = 3000K 40 = 4000K 50 = 5000K	ND = Non-Dimmable DM = Dimmable DS = Dimmable With Sensor	SSL = Snap & Slide CH4 = 4 Chain W90 = Wall Mount SWL = Swivel Mount

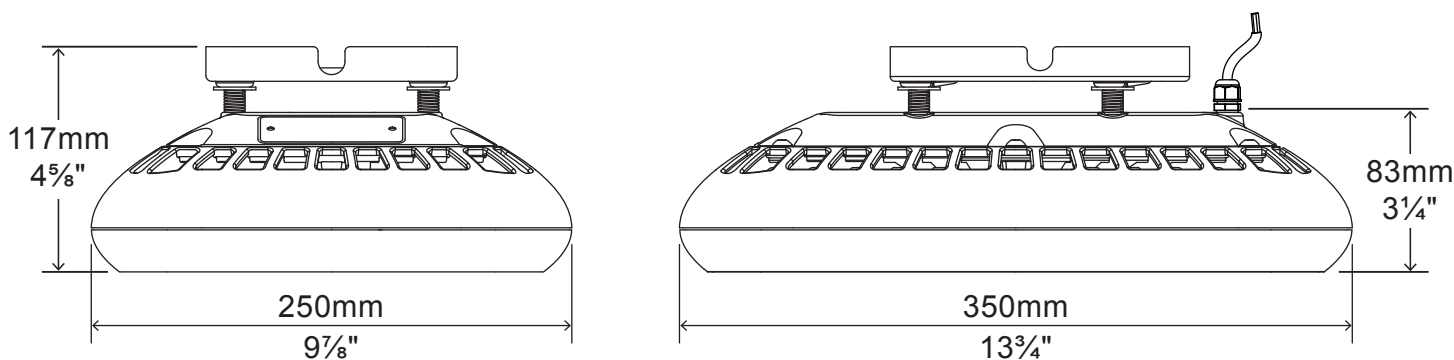
* SSL mount is standard, please see mounting options accessories for details.

NOTE: Outdoor application and corrosive environment please request glass lens.
Gray is the standard exterior color. Other colors are available on request.

Example

Part Number	Part Description
ILX3525-075UV-S5M-50DS-SSL	LED Industrial Light / 75 Watt / 90-277VAC / Type V Rectangular / Medium Pitch / 5000K Cool White / Dimmable with Motion Sensor / Snap & Slide

External Dimensions



Packaging Information

Case Quantity	Dimensions (LxWxH)	Weight
1	38.5 x 28.5 x 16.5 cm 15 ¹ / ₈ x 11 ¹ / ₄ x 6 ¹ / ₂ in	5.7 kg 12.5 lbs

ILX 3525 Series

Extreme Application LED Lighting

Specification - Type II / Type V Rectangular & B2 Billboard

Fixture Watts	35 W	55 W	75 W	100 W
Lumens (Total) *	4,830 lm	7,150 lm	9,150 lm	11,600 lm
Efficacy *	138 lm / W	130 lm / W	122 lm / W	116 lm / W
Number of LEDs & Driving Current	12@285mA	12@445mA	12@650mA	12@650mA
T _s - Solder Point Temp *	50°C	54°C	58°C	62°C
L70 Rating @ T _a 25°C	> 175K hours	> 160K hours	> 150K hours	> 135K hours
Operational Temperature (T _a)	-40°C ~ 60°C			
Input Voltage	90-277VAC 47~63Hz / 127-300VDC			
LED Model	Lumileds / Nichia / Cree			
CRI	75			
Lighting Control	Dimmable (0-10V, PWM) / Daylight & Motion Sensor			
Warranty	10-Year Limited			
Storage Temp. / Humidity	-40°C ~ 80°C / IP68 Waterproof Rated Fixture			
Transient Surge Protection	6kV / 3kA, optional 10kV / 5kA (L - L, L-G)			

* Test data @ T_a 25°C

NOTE: All Values Have ±7% Tolerance

Specification - F5 Type V Frosted

Fixture Watts	35 W	55 W	75 W	100 W
Lumens (Total) *	4,025 lm	6,100 lm	7,800 lm	10,000 lm
Efficacy *	115 lm / W	111 lm / W	104 lm / W	100 lm / W
Number of LEDs & Driving Current	12@285mA	12@445mA	12@650mA	12@650mA
T _s - Solder Point Temp *	49°C	51°C	54°C	61°C
L70 Rating @ T _a 25°C	> 185K hours	> 175K hours	> 160K hours	> 140K hours
Operational Temperature (T _a)	-40°C ~ 60°C			
Input Voltage	90-277VAC 47~63Hz / 127-300VDC			
LED Model	Lumileds / Nichia / Cree			
CRI	70 / 80			
Lighting Control	Dimmable (0-10V, PWM) / Daylight & Motion Sensor			
Warranty	10-Year Limited			
Storage Temp. / Humidity	-40°C ~ 80°C / IP68 Waterproof Rated Fixture			
Transient Surge Protection	6kV / 3kA, optional 10kV / 5kA (L - L, L-G)			

* Test data @ T_a 25°C

NOTE: All Values Have ±7% Tolerance

