

# CLM 422 Series

## LED Ceiling Luminaire Module - 35Watt



## Product Information

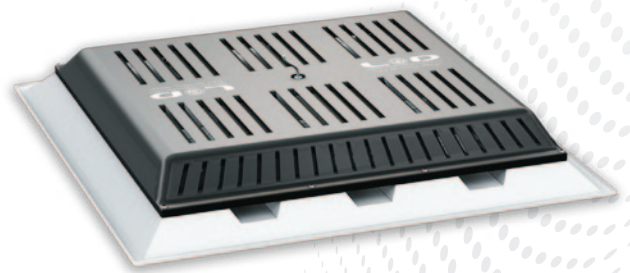
The **CLM422** LED Ceiling Luminaire Module is the first truly engineered commercial grade (2'x 2') LED office light designed to replace fluorescent fixtures of much higher wattage classes.

It delivers evenly distributed horizontal and vertical foot-candles, ideally suited for typical work spaces and utility areas. The Patented Air Bi-Pass Convection System enables excellent thermal management to ensure long LED life with extended lumen maintenance and virtually zero fixture maintenance.

The CLM422 is the most cost effective, commercially viable solution available on the market today.

Patent No. 20130242548 A1

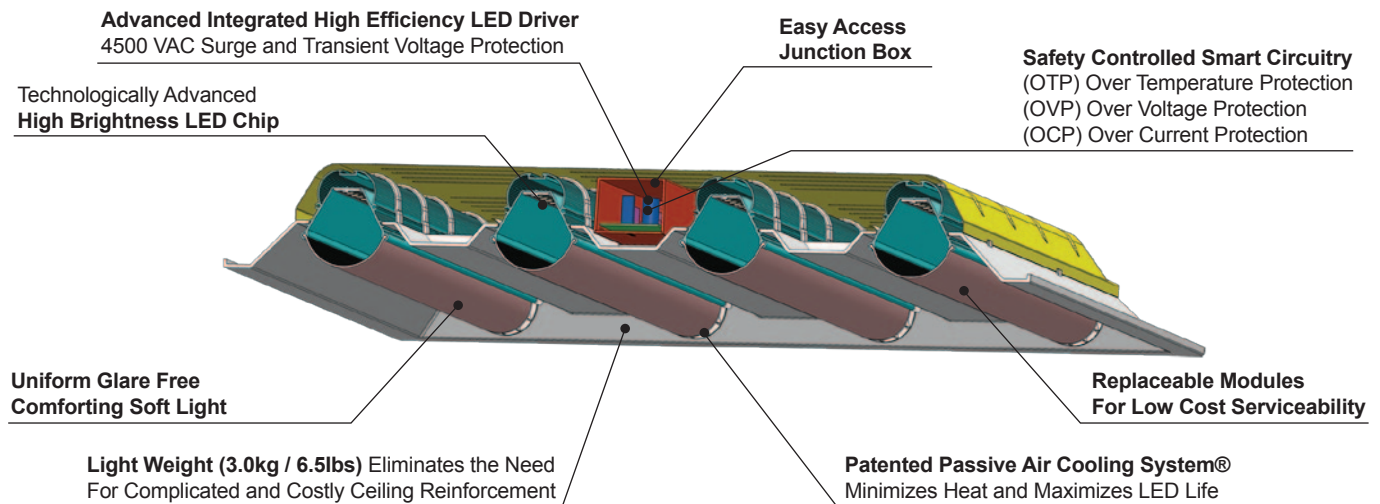
Other US and international patents pending



# CLM 422 Series

## LED Ceiling Luminaire Module - 35Watt

### Technical Drawing



### Advantages of CLM422

- **Standard 2' x 2' LED replacement** ceiling luminaire (troffer) for all office spaces
- **Light Weight (3.0kg / 6.5lbs)** eliminates the need for complicated and costly ceiling reinforcement
- **Glare-Free**, comfortable uniform lighting for all working environments
- **Smart Circuitry System** gives greater protection when used in unstable electrical grids
- Available with Programmable and **RF Wireless Dali Smart Control System with PIR motion sensor** enabling greater flexibility and maximizing savings
- **Replaceable modules** for low cost serviceability
- Patented Passive Air Cooling System enables low LED Junction Temperatures (T<sub>j</sub>) for **maintenance free long life**
- **Cost Effective Solution** as a true LED replacement with a 5-Year Warranty
- **Easy to Install**, ideal for retrofit and new construction
- Designed and Engineered in the **USA**

### Application

- Commercial Office
- Hospitality
- Healthcare
- Schools

# CLM 422 Series

## LED Ceiling Luminaire Module - 35Watt

### Features

- CLM422 Light Module is designed to last 80,000 hours with a minimum of 70% Lumen Maintenance
- Available in warm (3000K), neutral (4000K) & cool (5000K) white
- High lumen output & high efficacy
- Ultra-Energy efficient
- Indoor application

#### Light Module

- Patented Passive Air-Flow Convection<sup>®</sup> System designed to minimize heat and maximize LED life by reducing junction temperature of the LED
- CLM422 is manufactured using only the highest grade extruded alloys in the construction of each luminaire to maximize performance

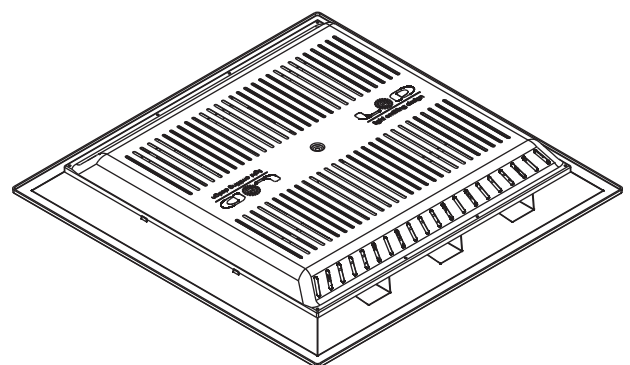
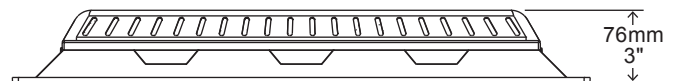
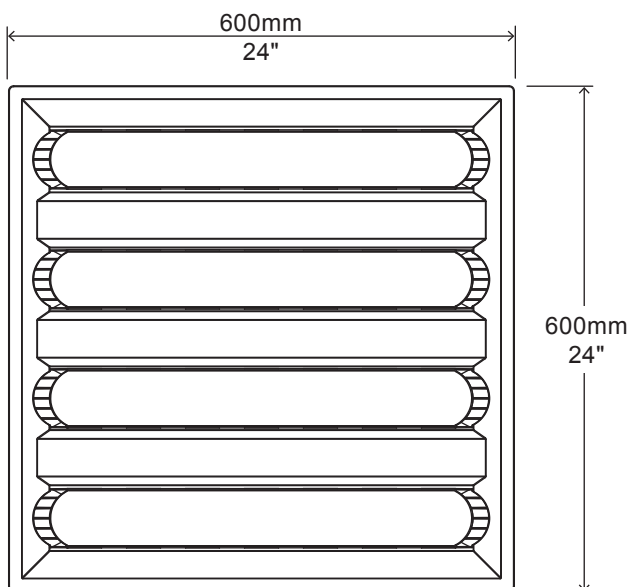
#### Electronics

- Patented MCPCB Technology enables ultra low LED junction temperatures for maintenance free long life
- Integrated high efficiency LED driver and power supply
- Smart circuitry with surge and transient voltage protection
- Powered by industry leading high brightness LED chip

#### Optics

- Proprietary reflector and optical diffuser system enables 120° glare-free comforting soft light without the uncomfortable LED “eye piercing effect”

### External Dimensions



### Packaging Information

Case Quantity	Dimensions (LxWxH)	Weight
5	65 x 65 x 45 cm 25 <sup>5</sup> / <sub>8</sub> x 25 <sup>5</sup> / <sub>8</sub> x 17 <sup>3</sup> / <sub>4</sub> in	21.5 kg 47.4 lbs

# CLM 422 Series

## LED Ceiling Luminaire Module - 35Watt

### Ordering Information

CLM422	Wattage		Voltage		CCT		Driver	
		35 45		UV = 90-277VAC		30 = 3000K 40 = 4000K 50 = 5000K		ND = Non-Dimmable DM = Dimmable DS = Dimmable + Sensor

NOTE: White is the standard housing exterior color. Other colors are available on request.

### Example

Part Number	Part Description
<b>CLM422-35UV-50DS</b>	2' x 2' (600 x 600mm) Ceiling Luminaire Module / 35Watt / 90-277VAC / 5000K Cool White / Dimmable with Motion Sensor

### Specification

Input Voltage	90-277VAC 47~63Hz
Fixture Watts *	35 Watt
Lumens (Total) *	3,750 Lumens
Efficacy *	107 Lumens / W
LED Model	Nichia
CRI	85
T <sub>s</sub> - Solder Point Temp *	42°C
L70 Rating @ T <sub>a</sub> 25°C	> 100K hours
Light Beam Angle	120°
Lighting Control	Dimmable (0-10V) / DALI & Motion Sensor
Warranty	5-Year Limited
Operational Temperature (T <sub>a</sub> )	-40°C ~ 50°C
Humidity	-40°C ~ 80°C / 20 - 95% RH non - condensing

\* Test data @ T<sub>a</sub>: 25°C  
NOTE: All Values Have ±7% Tolerance



# CLM 422 Series

## LED Ceiling Luminaire Module - 35Watt

### Photometry (LM79 Test Number LTL 309140)

Average Luminance Table (cd/m<sup>2</sup>)

Vertical Angle (°)	Horizontal Angle (°)		
	Along	45	Across
45	3754	3783	3677
55	3320	3380	3245
65	2822	3087	2926
75	2166	2995	2903
85	990	3310	2901

NOTE: All Values Have ±7% Tolerance

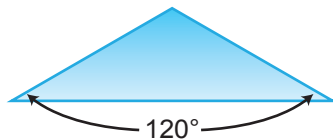
Lumen values may be lower than those indicated on the product specification page due to technological advancements.

Zonal Lumens and Percentages

Zone (°)	Lumens	% of Luminaire
0-30	1107	30.93
0-40	1766	47.08
0-60	2932	78.18
0-90	3750	100.00
40-90	1876	50.01
60-90	709	18.90
90-180	0	0.00
0-180	3750	100.00

NOTE: All Values Have ±7% Tolerance

### Illumination Levels



Height	LUX	FC
2m / 6.5ft	340	31.6
3m / 9.8ft	175	16.3
4m / 13ft	103	9.6
5m / 16.5ft	50	4.6

NOTE: Light Intensities Are Measured Directly Below The Fixture Using Clear Lens.  
All Values Have ±7% Tolerance.

Polar Plot

